



## ACTIVITY MANAGEMENT PLAN PADDLING

Activity	Paddling – Flat Water
Location / Site	Wainui Beach / French Farm / Tikao Bay / other areas around Canterbury
Parking	See site specific information
Grid Reference	See site specific information
Water	See site specific information
Toilets	See site specific information
Access Permission	NA
Instructor Requirements	The Kind Foundation Kayaking (Flatwater) Competency or equivalent Induction and/or training at particular site
Specific Equipment & Resources	Instructor: Tow-line, whistle and drybag Buoyancy aids and helmets for all
Specific Policies	Mobile phone and first aid kit in drybag All participants must be equipped with helmet, buoyancy aid and closed toes footwear Weather/ forecast to checked/assessed Ratio: 11 participants and 1 Adult Helper (in up to 9 craft): 1 instructor per group plus an additional instructor when 3 or more groups on the water
Emergency Response	Seeking assistance: 1. Use mobile phone in emergency kit 2. Send adult or second instructor to emergency vehicle 3. Send adult or second instructor to private residences or the road (depending on location) Follow general The Kind Foundation Emergency Procedures Follow relevant site evacuation procedures
Previous Incidents	Hit on head from paddle/boat; Cuts from rocks/shells; un-forecasted weather event blowing participants onto rocks or out to harbour; kayaks not securely fastened onto trailer and falling off; person falling off kayak trailer whilst securing boats / tie downs

### Standards and Codes of Practice:

- [EONZ & NZRA \(2018\) Flatwater Floating and Paddling: Good Practice Guide](#)

Site/Activity Specific Hazard/Risk	Management of Hazard
Other Users	Instructor to brief participants on surroundings and other users. Instructor to vigilant of other users
Submerged Objects	Participants to wear closed toed shoes. Ongoing dynamic risk assessment by instructor to ascertain suitability of activity in relation to area.
Environmental Conditions	Weather and forecast to be checked and assessed in conjunction with Marine Operation Guidelines. Instructor to monitor the wind direction and strength and make continuous dynamic risk assessment.
Drowning	Buoyancy aids to be correctly fitted to participants. Close group management by instructor.
Cold Water Shock	Consider use of wetsuits. Water temperatures to be considered when selecting games. Minimise jumping in and swimming if water temperature below 15°C and participants not wearing wetsuits.
Head injury	Participants and instructor to wear helmets. Participants to be briefed on paddle handling and to be aware of each other's positioning.
Kayak / SUP falls off trailer	Loading and unloading to be managed by instructor. All kayaks / SUPs to be tied securely when in transit.
Manual handling	Brief participants on correct technique; instructor to monitor.
Hypothermia	Monitor participants throughout session. Alter session according to conditions. Spare layers to be carried in dry bag.
Flora and Fauna	Brief participants on environmental impact, manage sea-life interaction, esp. Seals (always allow access to sea), seaweed (slippery), sharp shells.
Water quality	Reduced water quality common during and after heavy rain events, check <a href="#">Land, Air, Water Aotearoa (LAWA) - Can I swim here?</a> Sometimes signs maybe present. If the water appears foamy or has an oil slick look avoid swimming / exposing mouth and ears to the water. If possible, select a different site if this isn't possible, no water entry.

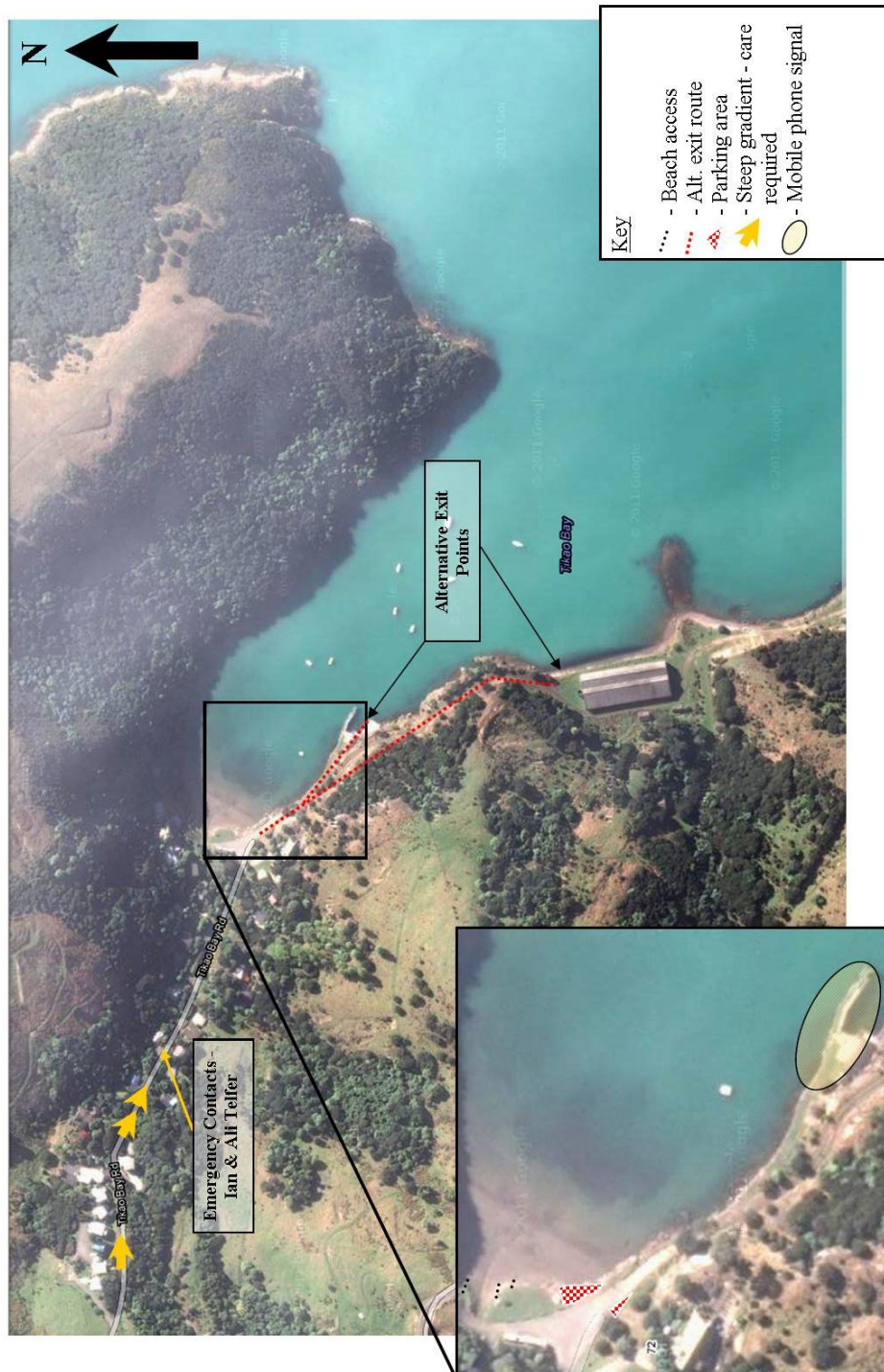
All AMP's are reviewed annually, or as the result of incident and accident investigation, risk assessment, changes to legislation and industry guidelines etc. Please see The Kind Foundation - Safety Management Plan for further information on Continual Improvement

## Padding – Tiako Bay

### General Information

<b>Parking</b>	Adjacent to grassy picnic area – keep track clear
<b>Grid Reference</b>	NZTopo50-BY25 - 934 507
<b>Water</b>	None
<b>Toilets</b>	Public toilets – Tikao Bay
<b>Access Permission</b>	NA

Note: The road down to Tikao Bay is steep and should be driven with care. Remember the van will be heavy, particularly when towing the trailer. Keep the van in a low ratio gear to use engine braking.

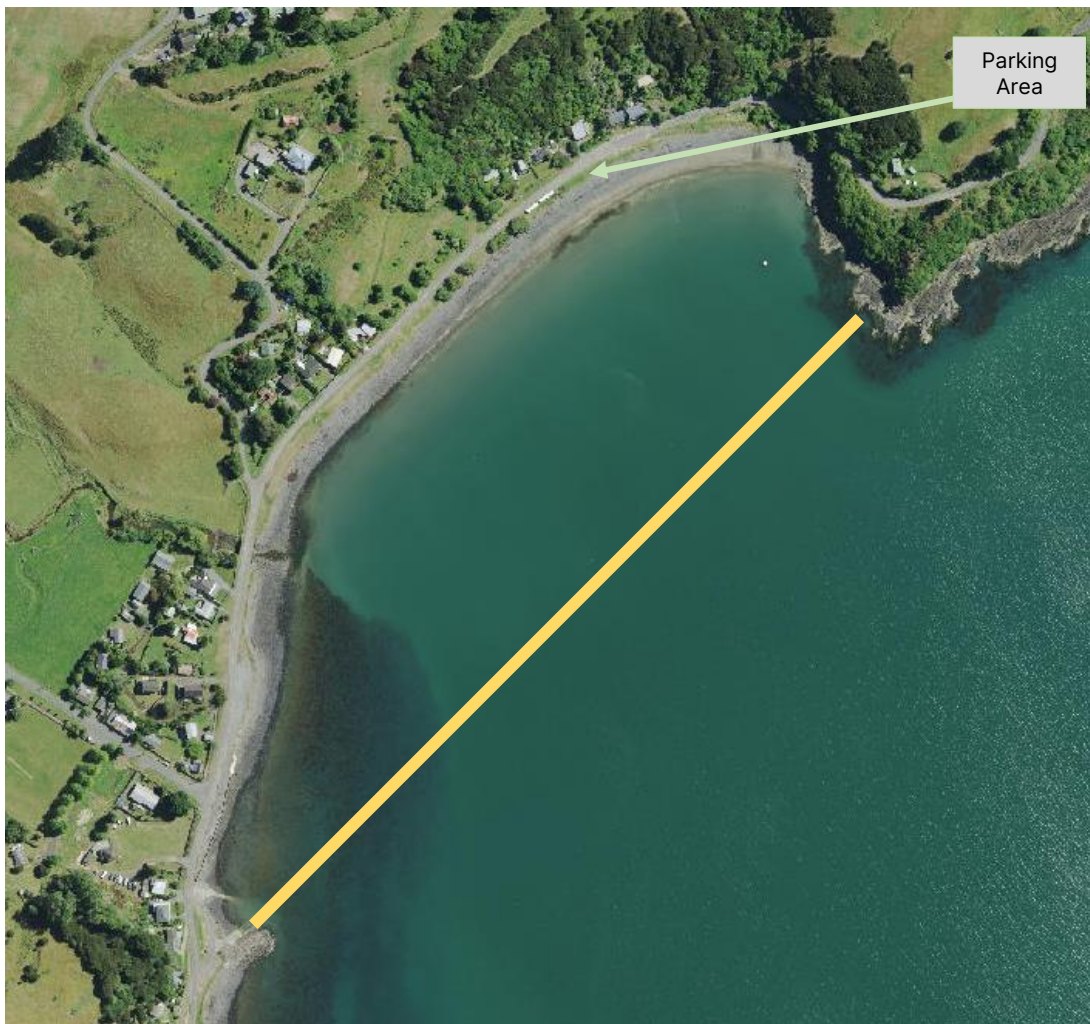


All AMP's are reviewed annually, or as the result of incident and accident investigation, risk assessment, changes to legislation and industry guidelines etc. Please see The Kind Foundation - Safety Management Plan for further information on Continual Improvement

**Paddling – Wainui Beach (North)**

General Information

<b>Parking</b>	Wainui Beach (North) on grass opposite last house
<b>Grid Reference</b>	NZTopo50 – BY25 926 489
<b>Water</b>	None
<b>Toilets</b>	Wainui Beach
<b>Access Permission</b>	NA
<b>Weather / Tide considerations</b>	Access challenging when not low tide Particularly good site when N & NW winds Exposed to southerlies and easterlies Check conditions prior to confirming use of site on the day



General Points:

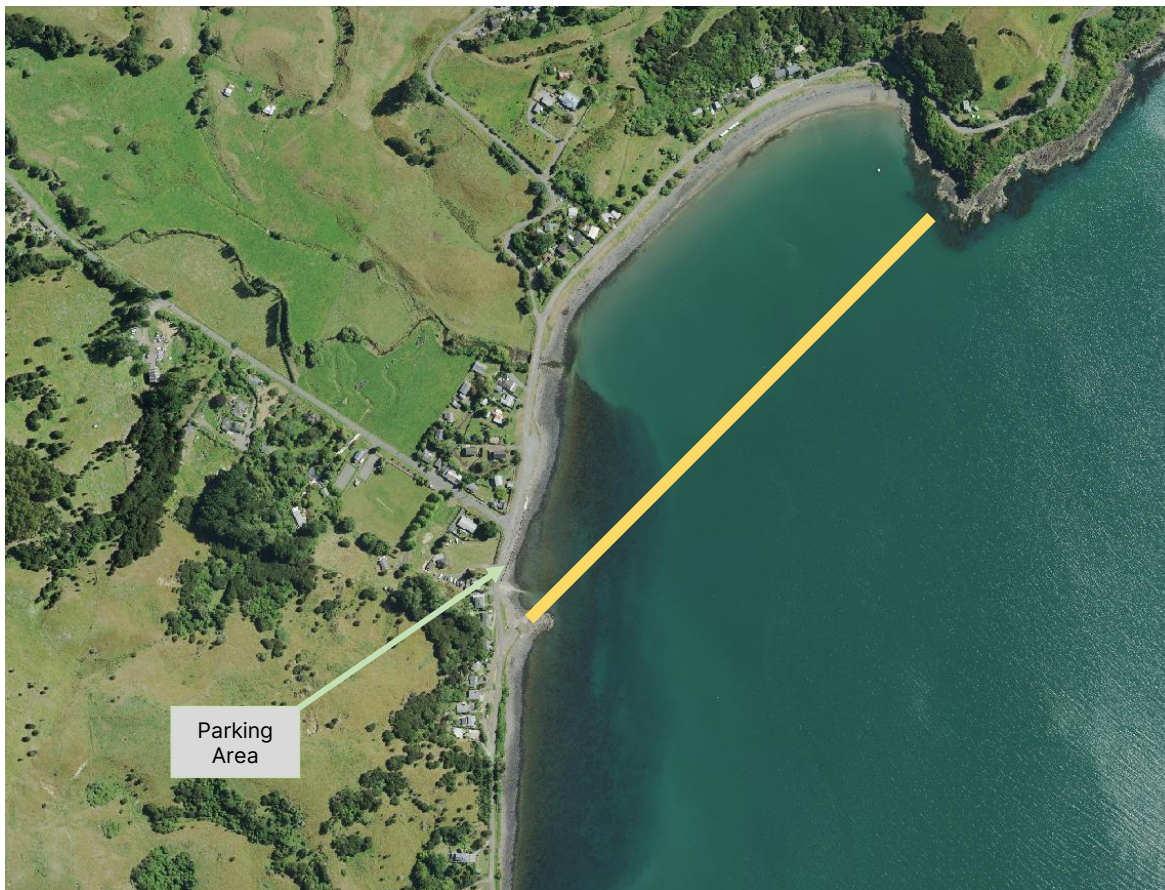
- Paddle within the area between the shoreline and yellow line marked in the map

All AMP's are reviewed annually, or as the result of incident and accident investigation, risk assessment, changes to legislation and industry guidelines etc. Please see The Kind Foundation – Safety Management Plan for further information on Continual Improvement

**Padding – Wainui Slipway**

General Information

<b>Parking</b>	Wainui sea wall
<b>Grid Reference</b>	NZTopo50 – BY25 922 484
<b>Water</b>	None
<b>Toilets</b>	Wainui Domain
<b>Access Permission</b>	NA
<b>Weather / Tide Considerations</b>	Exposed to southerlies and easterlies Check conditions prior to confirming use of site on the day



General Points:

- Paddle within the area between the shoreline and yellow line marked in the map
- Remember there are other slipway users
- Keep out of the way of the driveway / road

All AMP's are reviewed annually, or as the result of incident and accident investigation, risk assessment, changes to legislation and industry guidelines etc. Please see The Kind Foundation – Safety Management Plan for further information on Continual Improvement

**Padding – French Farm Bay**

General Information

<b>Parking</b>	French Farm Bay
<b>Grid Reference</b>	NZTopo50 – BY25 926 528
<b>Water</b>	None
<b>Toilets</b>	French Farm Beach
<b>Access Permission</b>	NA
<b>Weather / Tide Considerations</b>	Muddy beach makes unsuitable access when low tide Exposed to northerlies and easterlies Check conditions prior to confirming use of site on the day



General Points:

- Paddle within the area between the shoreline and yellow line marked in the map

---

All AMP's are reviewed annually, or as the result of incident and accident investigation, risk assessment, changes to legislation and industry guidelines etc. Please see The Kind Foundation – Safety Management Plan for further information on Continual Improvement