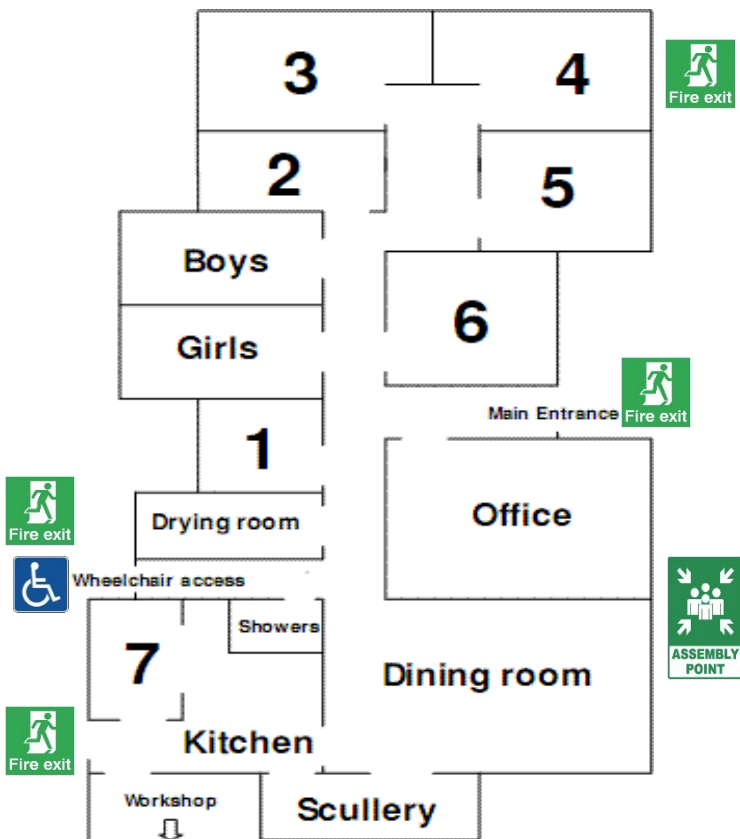




Room Allocations

Upon arrival it is essential that the group leader completes this form please.

A copy should be on the clipboard in case of a fire or other emergency.



Cabin 1 (sleeps 2)	

Cabin 2 (sleeps 4)	

Cabin 3 (sleeps 11)	

Cabin 4 (sleeps 8)	

Cabin 5 (sleeps 9)	

Cabin 6 (sleeps 9)	

Cabin 7 (sleeps 2)	

Useful Points to Note:

- > Room 4 has a fire exit window
- > Room 6 window leads to the verandah
- > Room 7 has an ensuite but is away from all other cabins
- > Rooms 1, 2, 3, 5, 6 & 7 have lockable